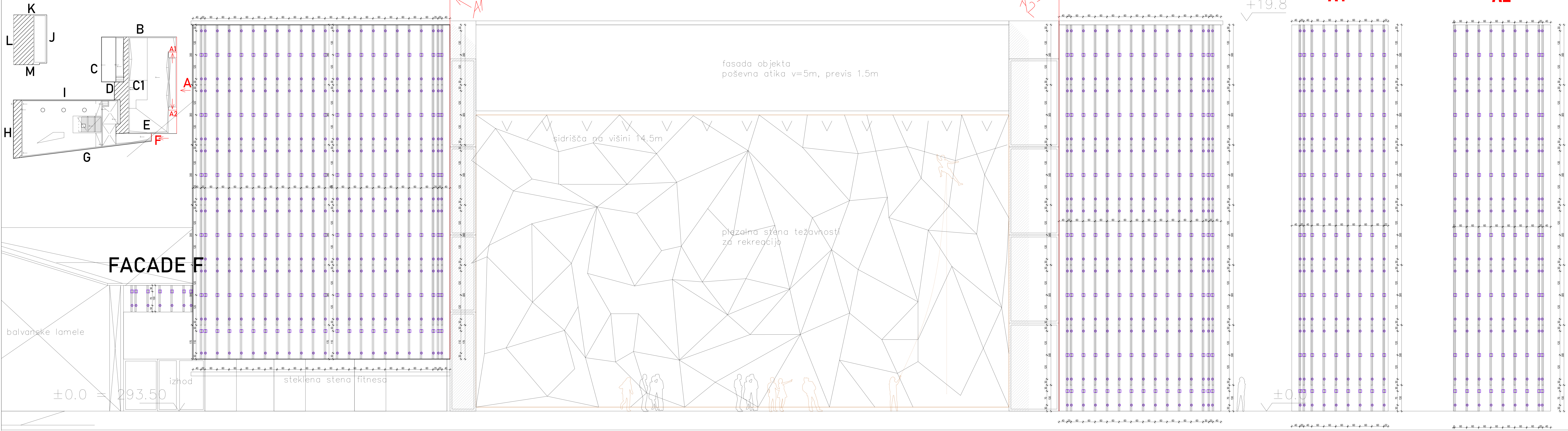


FACADE A





The drawing consists of two main parts. The left part is a large triangular grid representing a facade layout. The grid is composed of numerous small squares, each containing a number. The numbers are arranged in a way that suggests a coordinate system or a sequence of measurements. The grid is bounded by a large triangle, with the hypotenuse forming the right edge. The top and left edges are marked with dimensions. The right part is a detailed section view of a window or door frame. It shows the internal structure, including the frame, the opening, and the surrounding walls. The view is labeled with letters A through M, indicating different components and dimensions. The overall drawing is a technical architectural plan, likely for a building facade or a large-scale structure.

In case of **discrepancy** between the situation on the building site and the architectural design and laying plan, be sure to contact the designer before installation.

All dimensions must be checked in on building site, the dimensions given in the laying plan are taken from the architectural drawings. The contractor is responsible for the necessary elaboration of details and work plan. Meeting the requirements of investor and relevant services related to the construction of the facade are the responsibility of the contractor. All dimensions must be measured and determined on site. All technical specifications and manufacturer's instructions must be followed.

The level of the WWS 20 ± 0.0 mm stainless steel wall brackets must be determined on site.

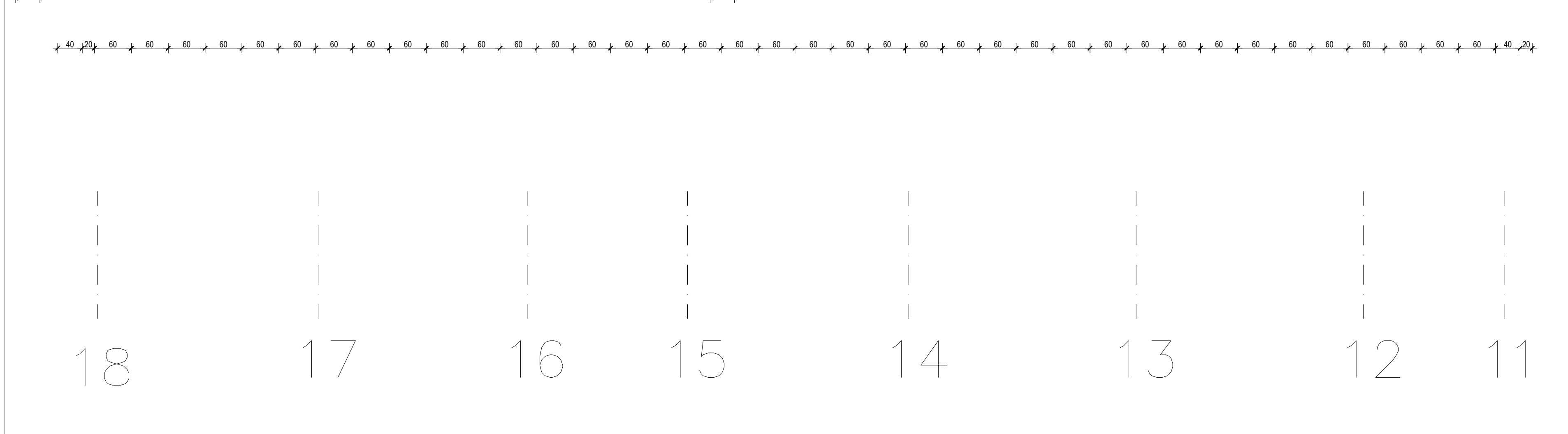
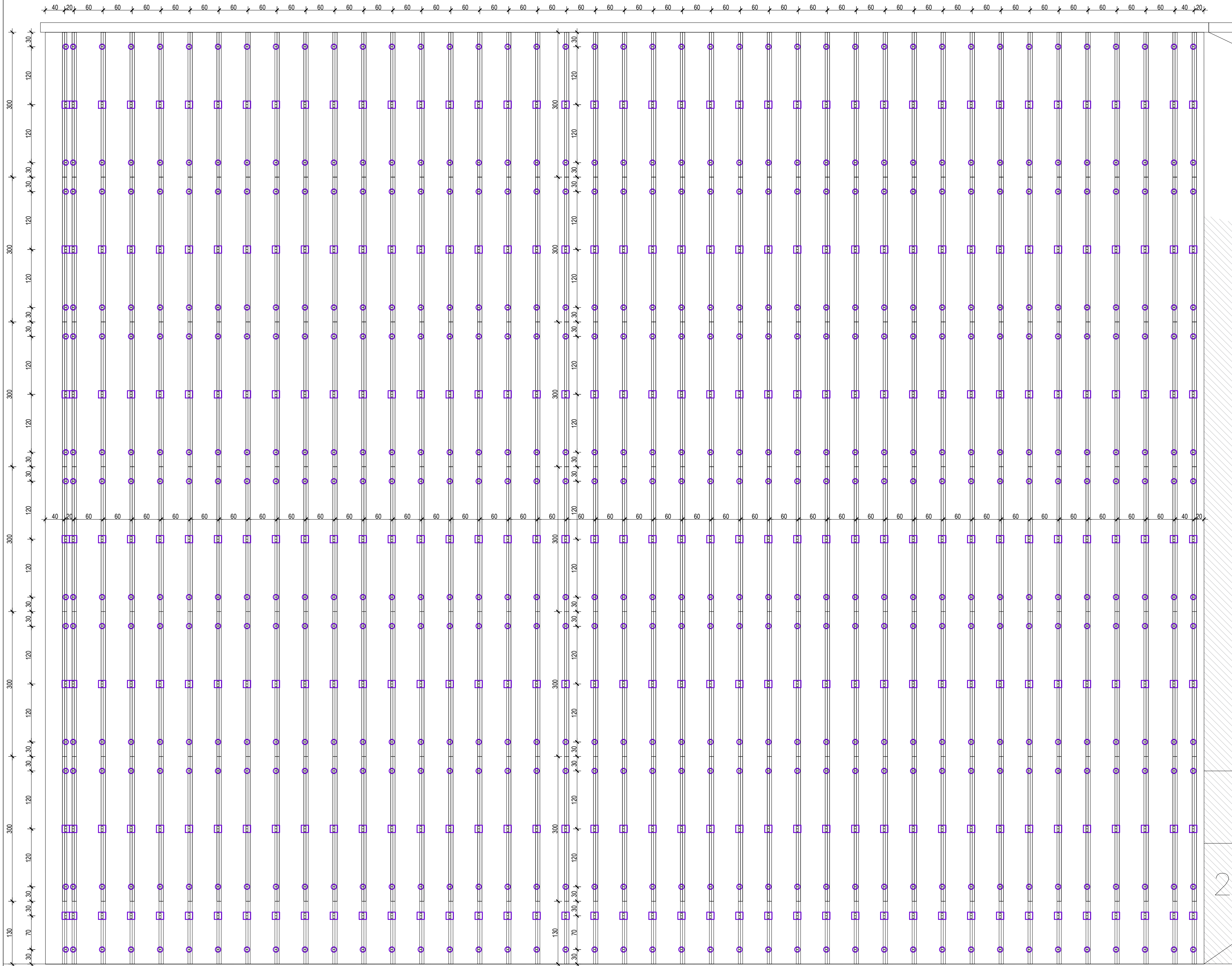
The drawings refer only to the substructure of the facade.

Finish of the facade and its joints should be carried out according to the architect's instructions.

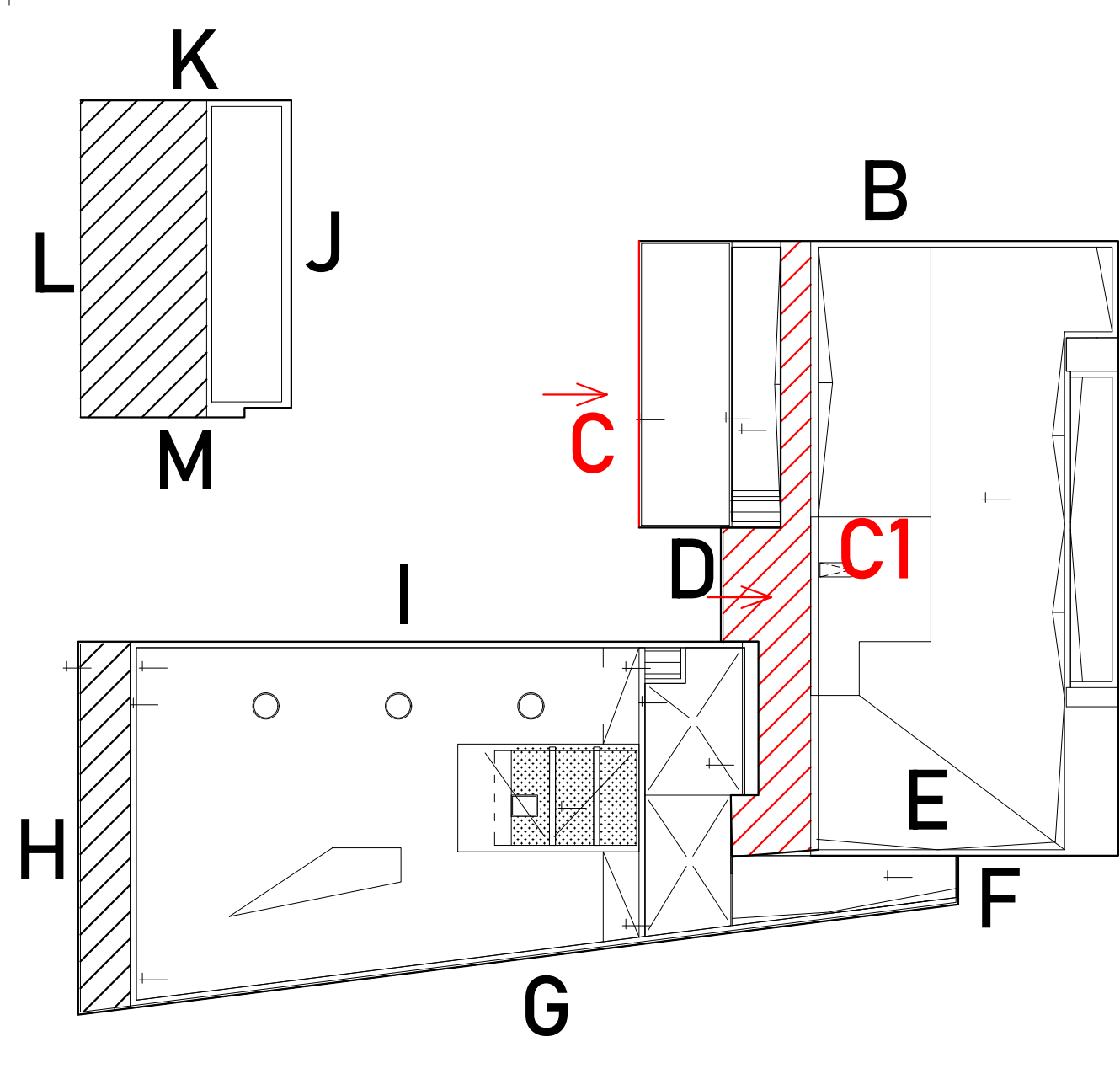
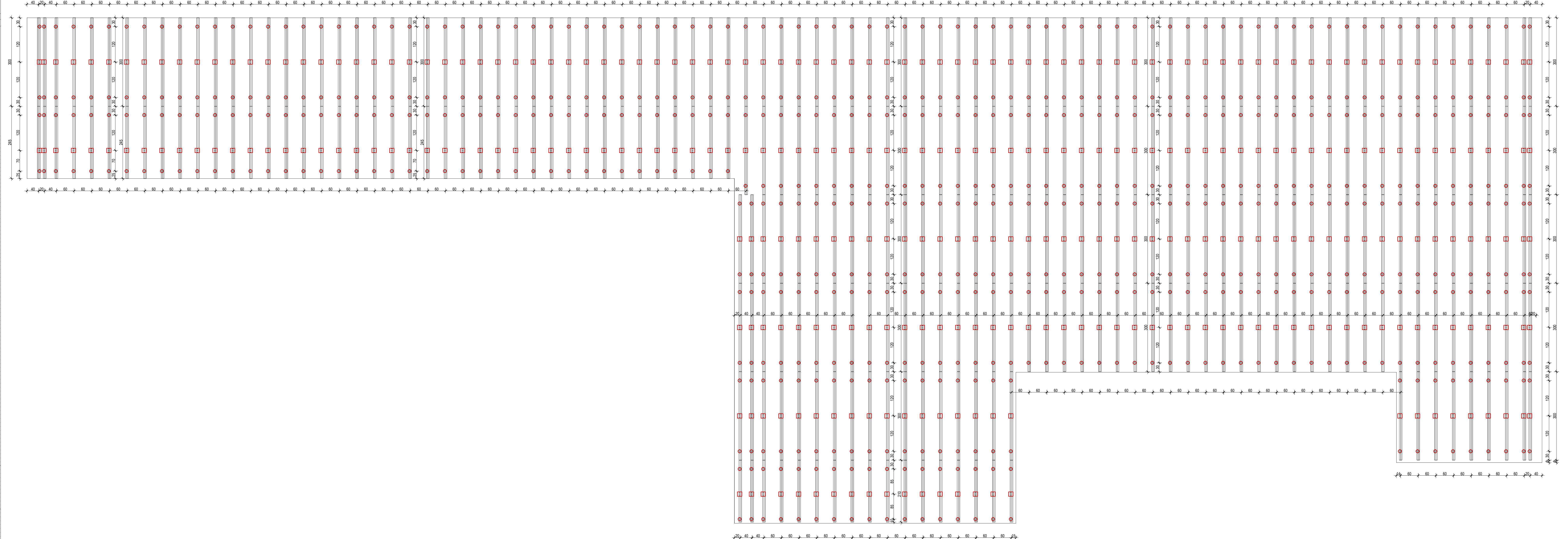
The draft is preliminary until it is approved by the architect (dimensions) and approved by the auditor or other responsible body or office (status).



FACADE C



FACADE C1



In case of discrepancy between the situation on the building site and the architectural design and laying plan, be sure to contact the designer before installation.  
All dimensions must be checked in on building site, the dimensions given in the laying plan are taken from the architectural drawings.  
These drafts do not replace the necessary elaboration of details and work plan. Meeting the requirements of investor and relevant services offices related to the construction of the facade are the responsibility of the contractor. All dimensions must be measured and determined on site. All technical specifications and manufacturer's instructions must be followed.  
The lengths of the M8 to 2.0 mm stainless steel wall brackets must be determined on site.  
The drawings refer only to the substructure of the facade.  
Finish of the facade and its joints should be carried out according to the architect's instructions.  
The draft is preliminary until it is approved by the architect (dimensions) and approved by the auditor or other responsible body or office (statics).

**HEMERIAN PROJEKTIRANJE D.O.O.**  
SLAVONSKA AVENIJA 52M, 10000 ZAGREB  
OIB: 02556667860

**Mezma Očista Ljubljana**  
Ivan Goran Kovač  
Bukovinarjeva 47, A1-0100 Villich, Austria  
PVP ID: A572646362  
Center plezalnih športov Ljubljana

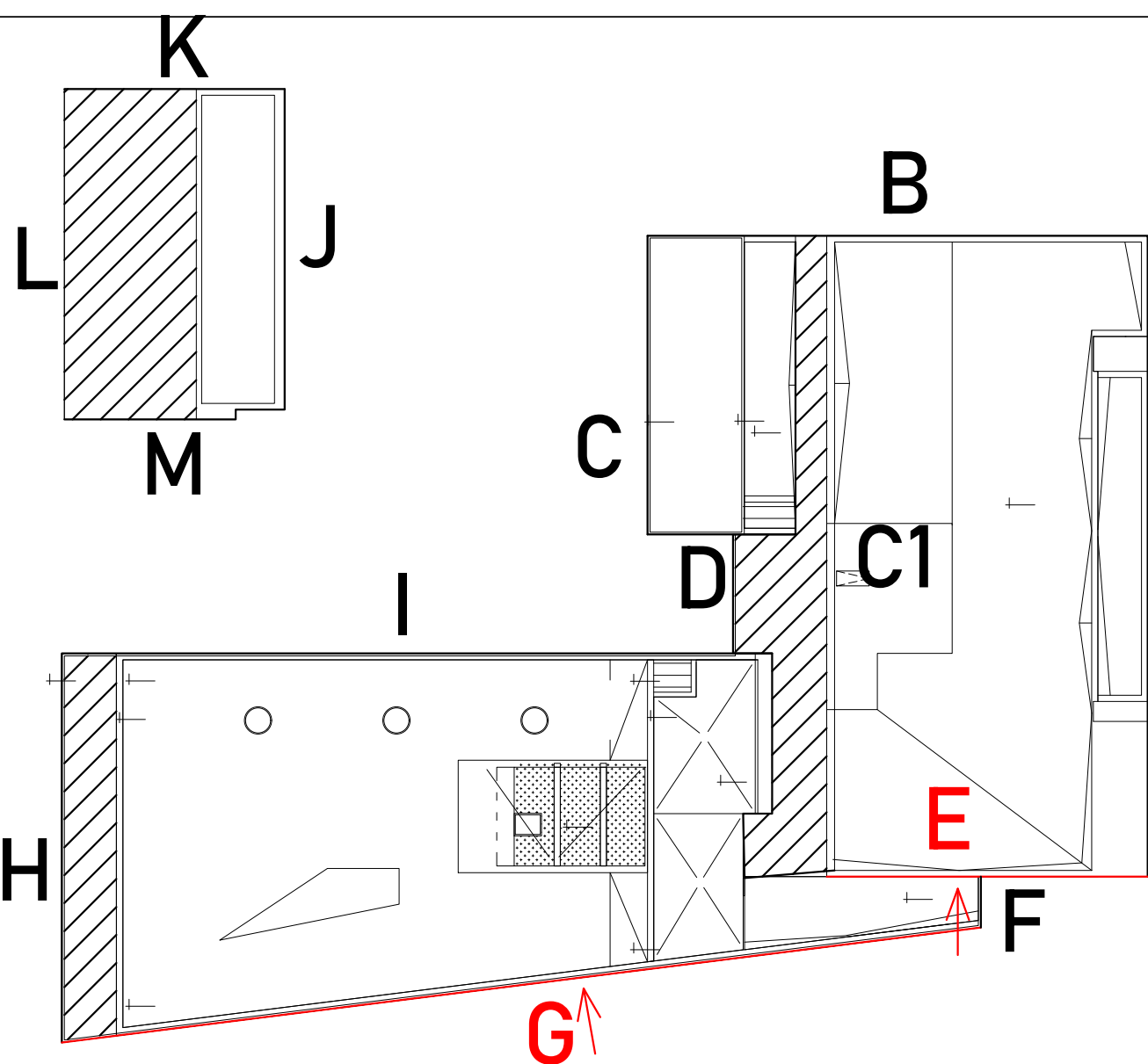
**STATIC CALCULATIONS** **DATE** January 2025. **SCALE** 1:50 **NO. OF SHEETS** 63

STATISTICAL DATA	
Author	HEMERIAN PROJEKTIRANJE D.O.O.
Client	Mezma Očista Ljubljana
Project Name	Center plezalnih športov Ljubljana
Project Number	2024-12-040-GR
Project Location	Ljubljana, Koroška ulica
Project Status	STATIC CALCULATIONS
Project Date	January 2025.
Project Scale	1:50
Project No. of Sheets	63




FACADE G

FACADE E



In case of discrepancy between the situation on the building site and the architectural design and laying plan, be sure to contact the designer before installation.  
All dimensions must be checked in on building site, the dimensions given in the laying plan are taken from the architectural drawings.  
These drafts do not replace the necessary elaboration of details and work plan. Meeting the requirements of investor and reviewing services offices related to the construction of the facade are the responsibility of the contractor. All dimensions must be measured and determined on site. All technical specifications and manufacturer's instructions must be followed.  
The length of the WH Sts 2.0 mm stainless steel wall brackets must be determined on site.  
The drawings refer only to the substructure of the facade.  
Finish of the facade and its joints should be carried out according to the architect's instructions.  
The draft is preliminary until it is approved by the architect (dimensions) and approved by the auditor or other responsible body or office (details).

 <b>MEMBRAN PROJEKTHANJE D.O.O.</b> SLAVONSKA AVENIJA 52A, 10000 ZAGREB t08: 0255667860		<b>SoVentec B Facade</b>	
<b>Mechanics Office Ljubljana</b> Ivan Vrtica, mag.ing.arh. Petra Benko, mag.ing.arh.		Designed and Drawn	
Ivan Vrtica, mag.ing.arh. Petra Benko, mag.ing.arh.		Checked and Approved	
2024-12-04-GR		<b>FACADE E+G</b>	
Ljubljana, Republika Hrvatska		Scale	
STAT. CALCULATIONS		1:50	
January 2025.		Date	
		Sheet	
		01	



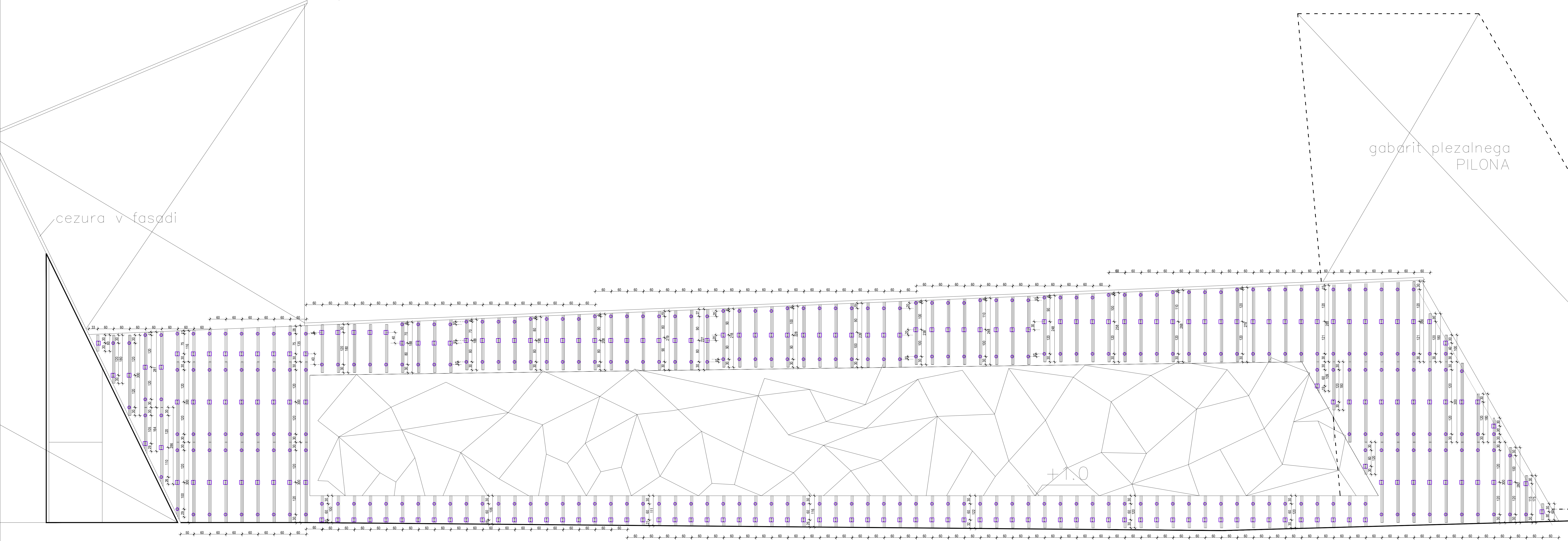
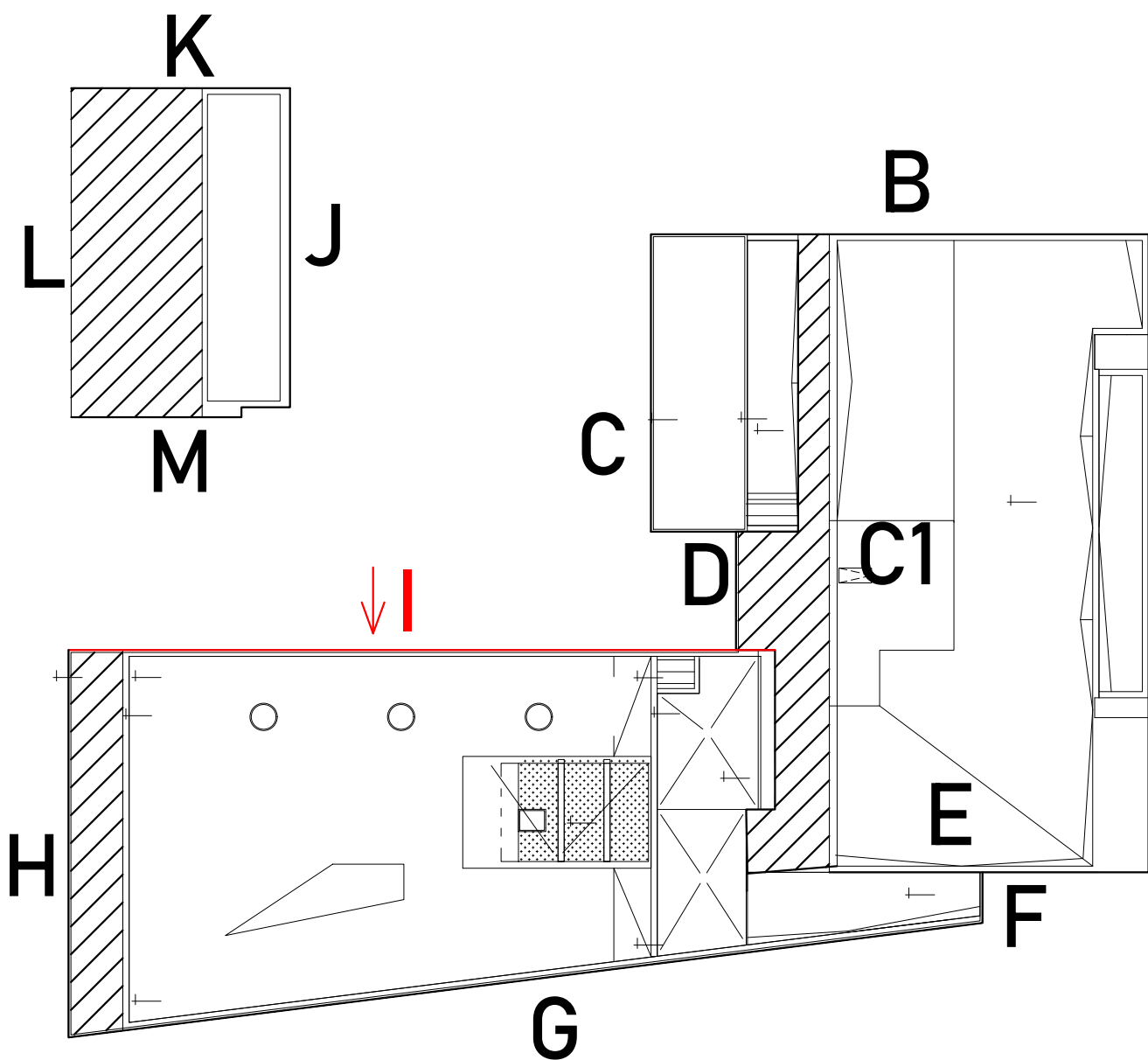


FACADE I

+19.8 +313.0

cezura v fasadi

gabarit plezalnega  
PILONA



y  
x2  
x1  
z

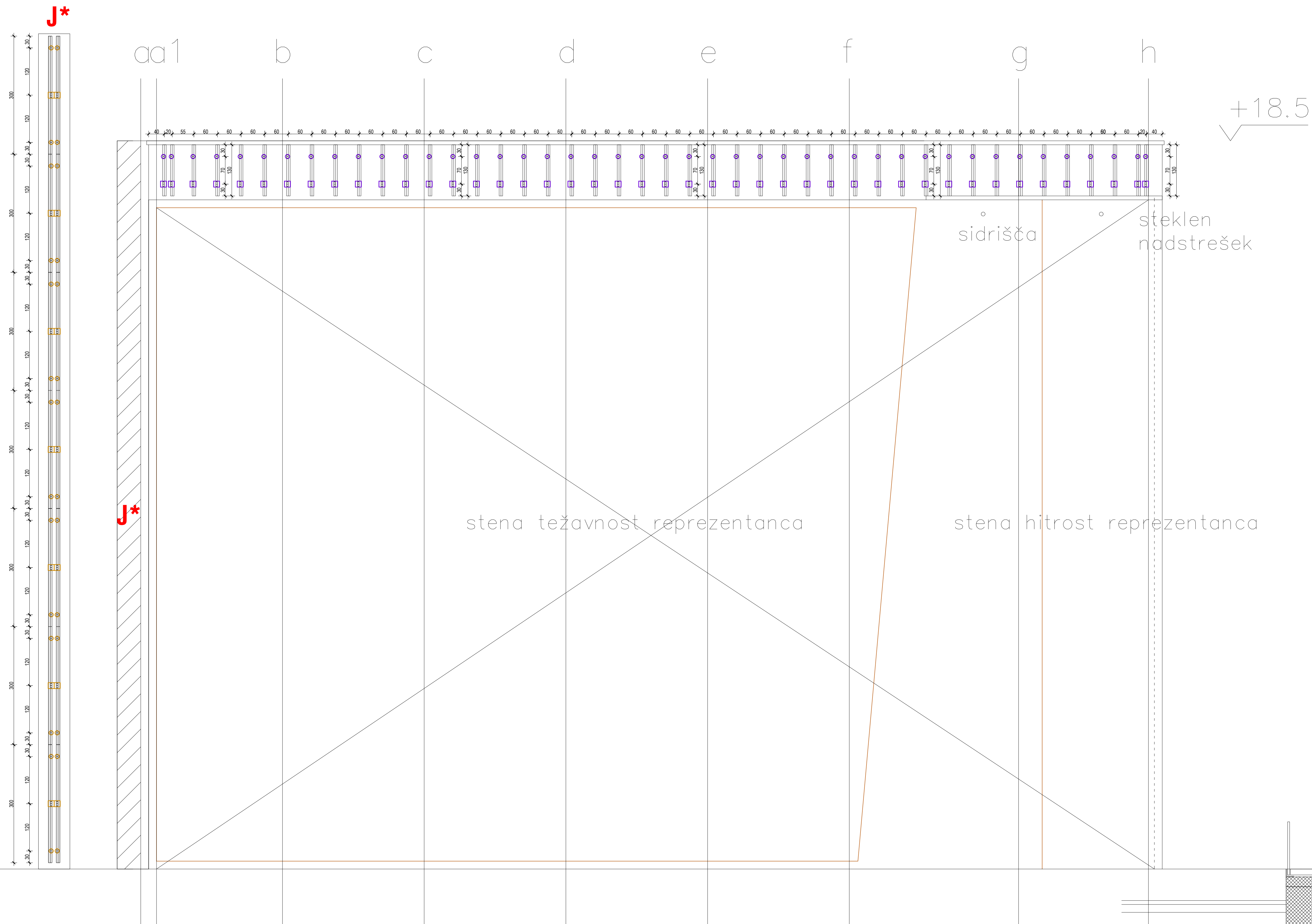
In case of discrepancy between the situation on the building site and the architectural design and laying plan, be sure to contact the designer before installation.  
All dimensions must be checked in on building site, the dimensions given in the laying plan are taken from the architectural drawings. These drafts do not replace the necessary elaboration of details and work plan. Meeting the requirements of investor and relevant services offices related to the construction of the facade are the responsibility of the contractor. All dimensions must be measured and determined on site. All technical specifications and manufacturer's instructions must be followed.  
The length of the WH Sio 3.0 mm stainless steel wall brackets must be determined on site.  
The drawings refer only to the substructure of the facade.  
Finish of the facade and its joints should be carried out according to the architect's instructions.  
The draft is preliminary until it is approved by the architect (dimensions) and approved by the auditor or other responsible body or office (status).

	<b>MEMBRAN PROJEKTIRANJE D.O.O.</b> SLAVJANSKA AVENIJA 120K, 10000 ZAGREB OIB: 02556667860	PROJECT <b>StoVentec R facade</b>
<b>Mešina Očena Ljubljana</b> Slo Gesar b.R. Nobelskova 47, AT-10500 Villach, Austria PIV ID: ATU2665392	DESIGNER <b>IVAN VRCA, mag.ing.arch.</b> <b>PETRA BENKO, mag.ing.arch.</b>	SIGNATURE AND STAMP
Center plezalnih športov Ljubljana	DATE <b>2024-12-04-GR</b> Ljubljana, Slovenija	REVISION <b>FACADE I</b>
STATIC CALCULATIONS	DATE January 2025.	SCALE 1:50

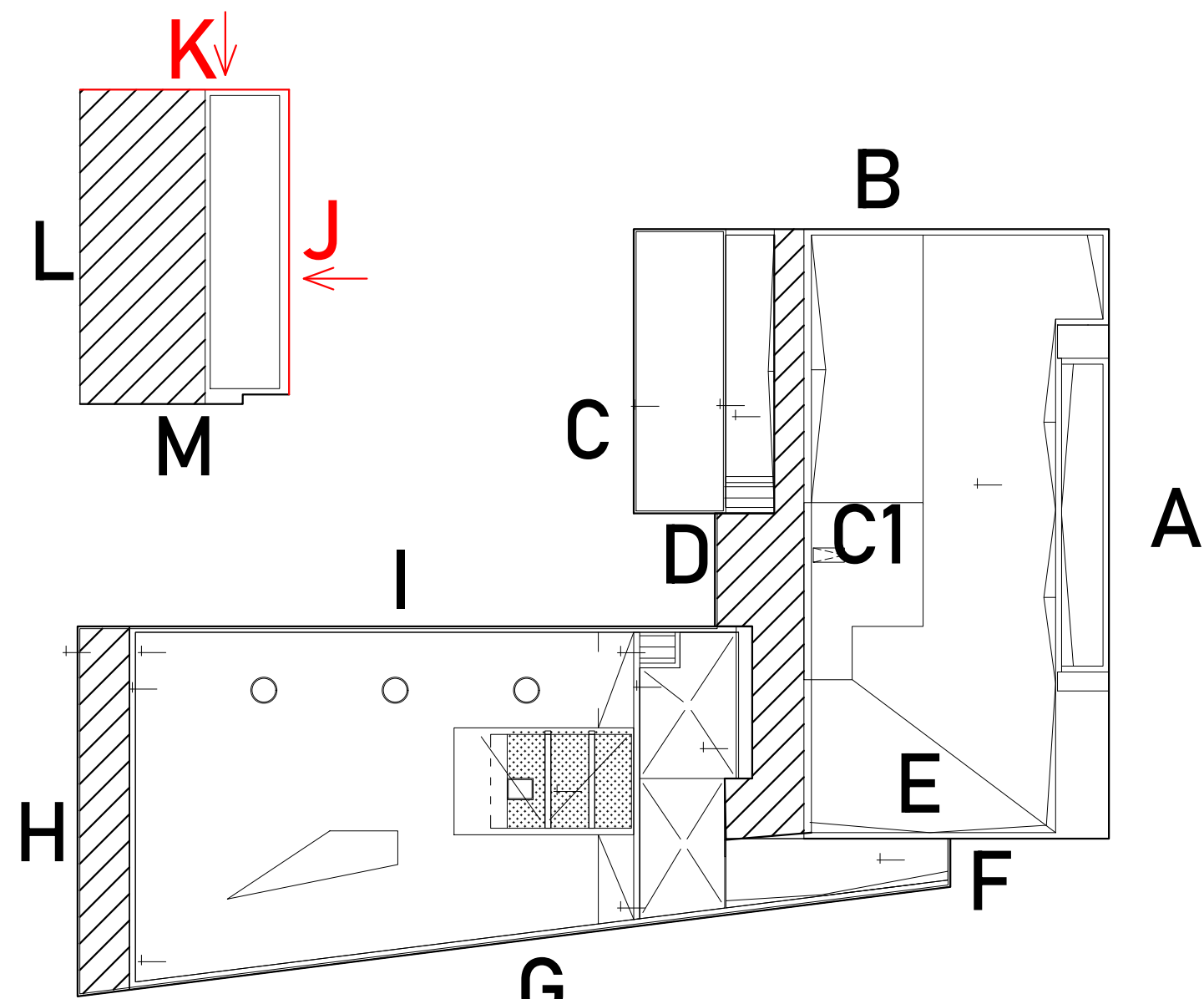
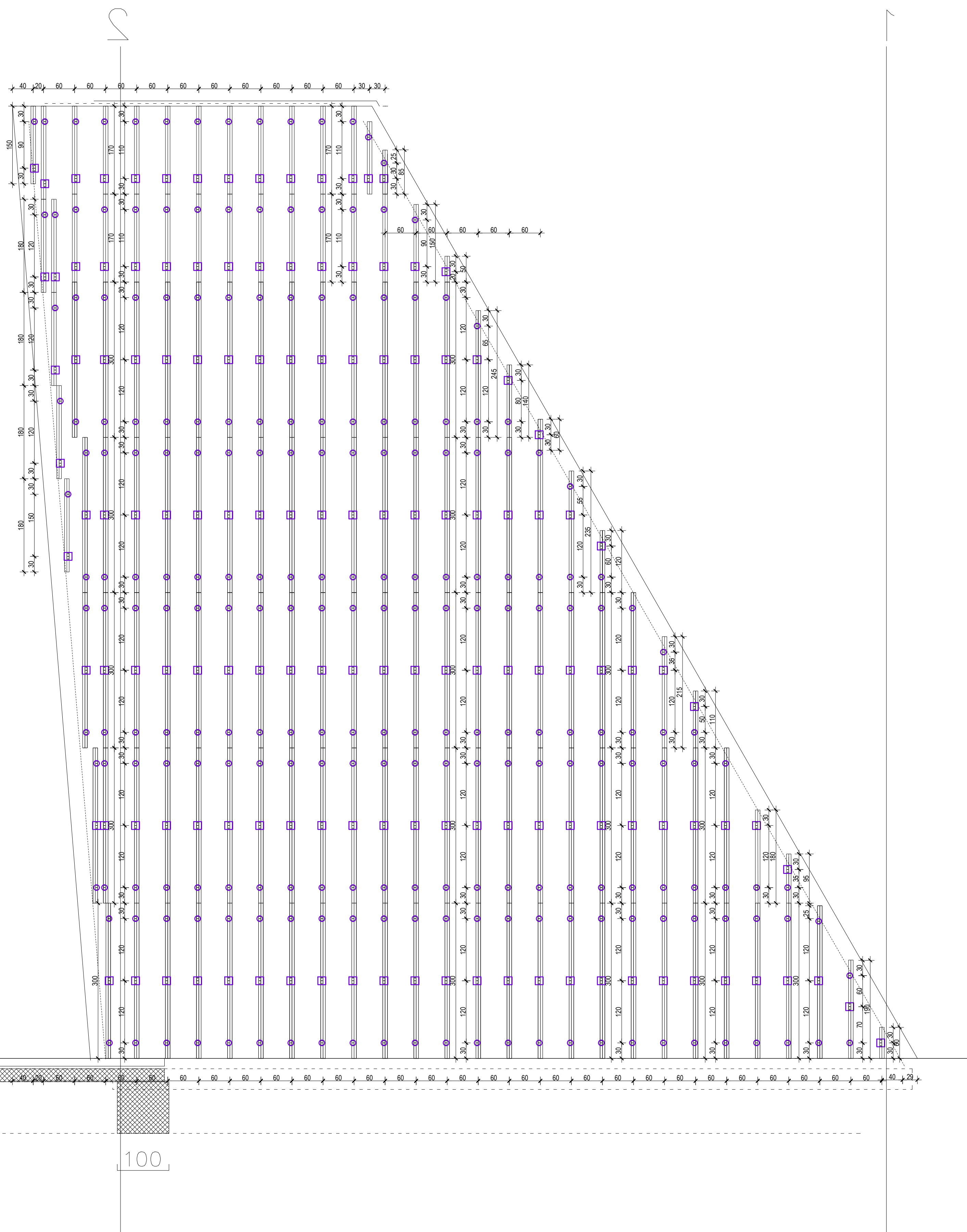
1 2 3 4 5 6 7 8 9 10 11 12 13 14 15 16 17 18 19 20 21 22 23 24 25 26 27 28 29 30 31 32 33 34 35 36 37 38 39 40 41 42 43 44 45 46 47 48 49 50 51 52 53 54 55 56 57 58 59 60 61 62 63 64 65 66 67 68 69 70 71 72 73 74 75 76 77 78 79 80 81 82 83 84 85 86 87 88 89 90 91 92 93 94 95 96 97 98 99 100



# FACADE J



# FACADE K



In case of discrepancy between the situation on the building site and the architectural design and laying plan, it is sure to contact the designer before installation.

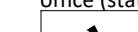
All dimensions must be checked in on building site, the dimensions given in the laying plan are taken from the architectural drawings. The contractor is responsible for explaining the necessary elaboration of details and work plan. Meeting the requirements of investor and relevant services related to the construction of the facade are the responsibility of the contractor. All dimensions must be measured and determined on site. All technical specifications and manufacturer's instructions must be followed.

The heights of the W100 2.0 mm stainless steel wall panels must be determined on site.

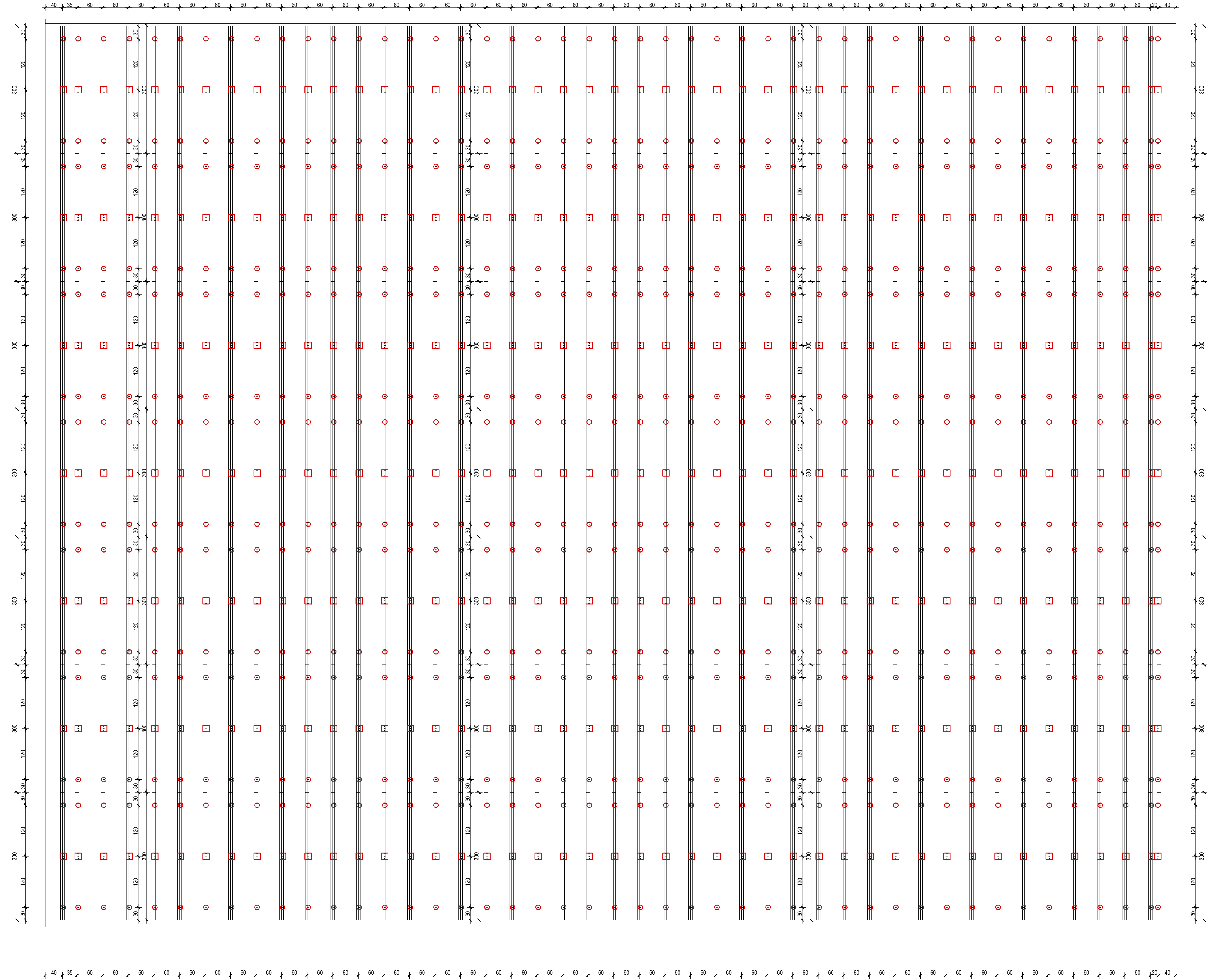
The drawings refer only to the substructure of the facade.

Finish of the facade and joints should be carried out according to the architect's instructions.

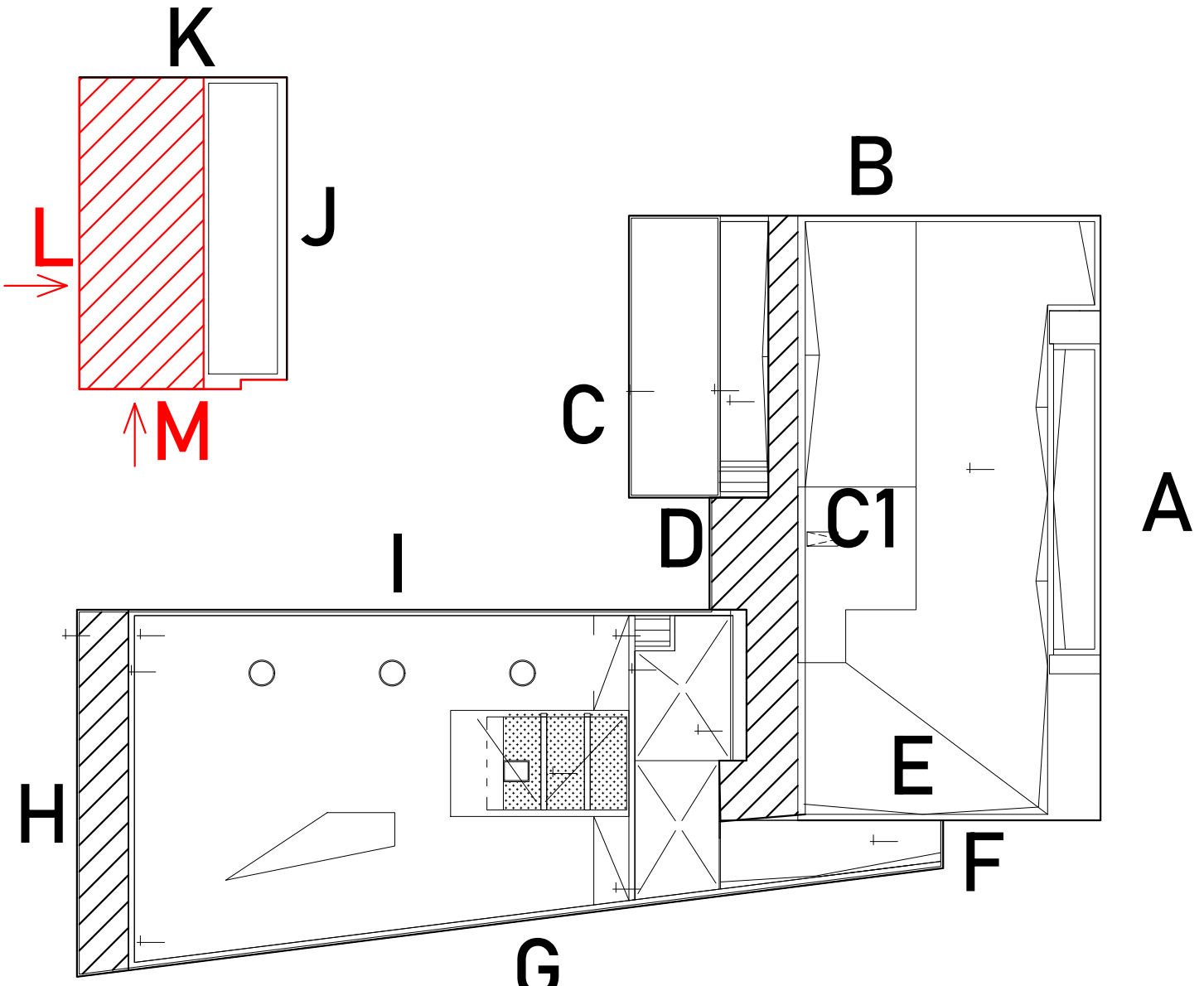
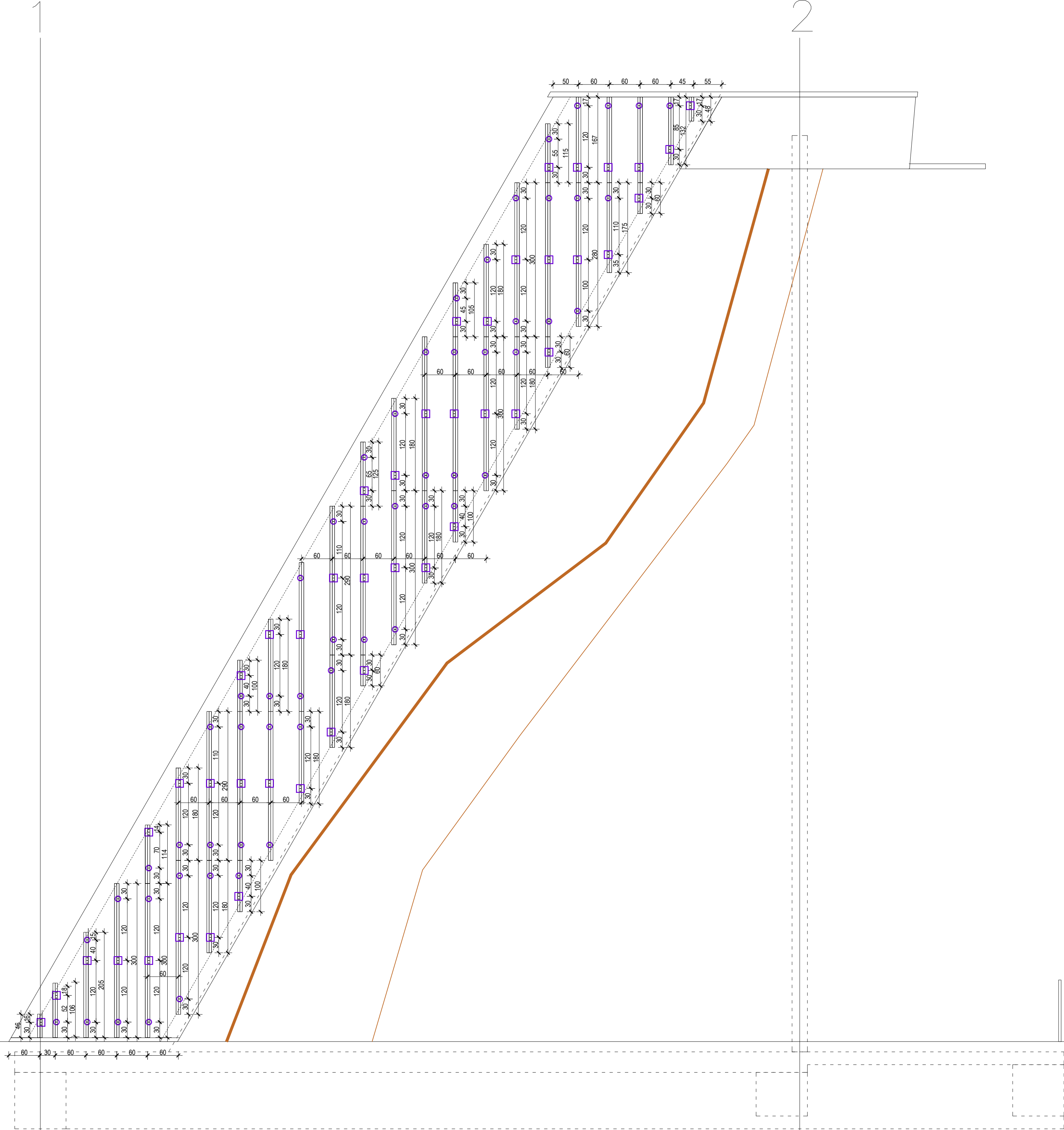
The draft is ultimately only if it is approved by the architect (dimensions) and approved by the auditor or other responsible body or office (status).

 <b>MEMBRAN PROJEKTIRANJE D.O.O.</b> SLAVINSKA AVENIJA 52M, 10000 ZAGREB IBAN: 9255667866		<b>POSREDOVATEL</b> Svetovnet H rade	
<b>Klijent</b> Matica Občina Lipjane Svetovnet H rade Bistrichara 47, AT 9508 Vilach, Austria P.O.B. 437556/5082 Center plezalnih sportov Lipjane 2024-12-04-09		<b>POSREDOVATEL</b> Ivan Rytka, maging.aedif. PETRA BERNO, maging.aedif.	
<b>STATIČKI IZRAČUNI</b> Lipjane, Hrvatska odob.		<b>POSREDOVATEL</b> FACADES + K	
January 2025.		1:50	
		1	07

FACADE L

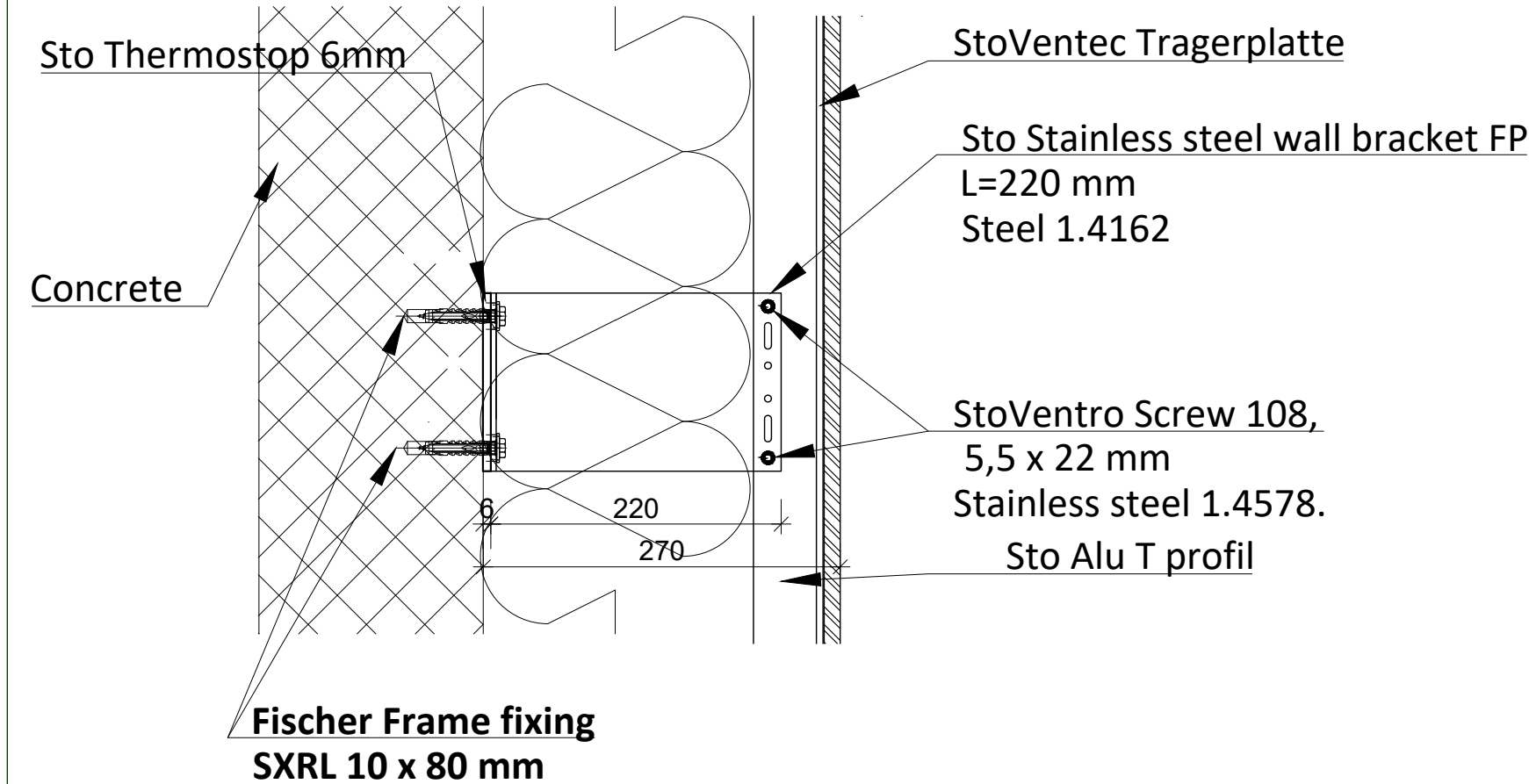
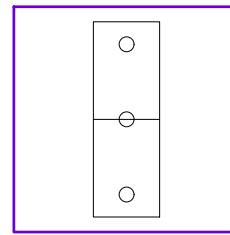


FACADE M

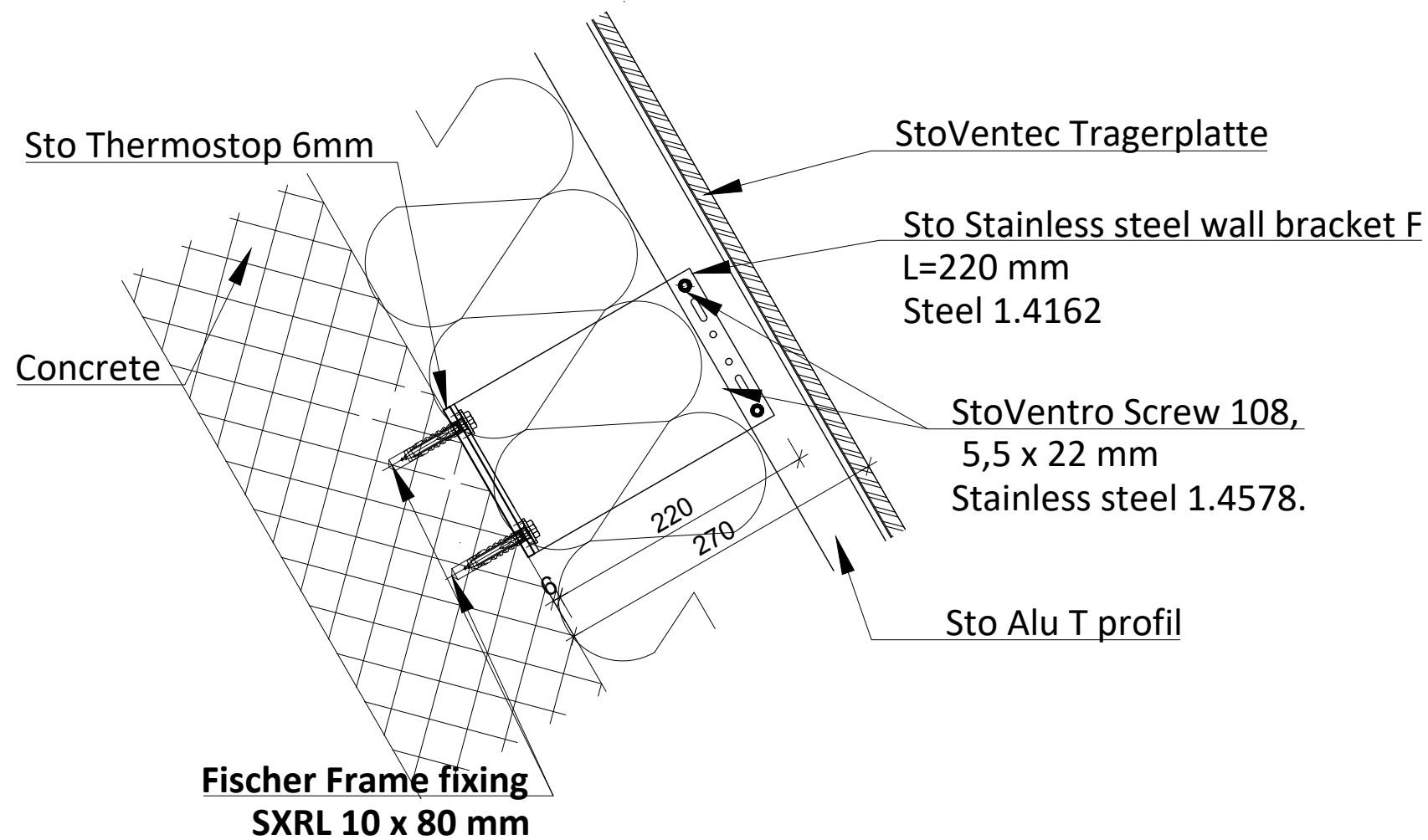
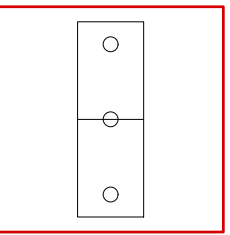




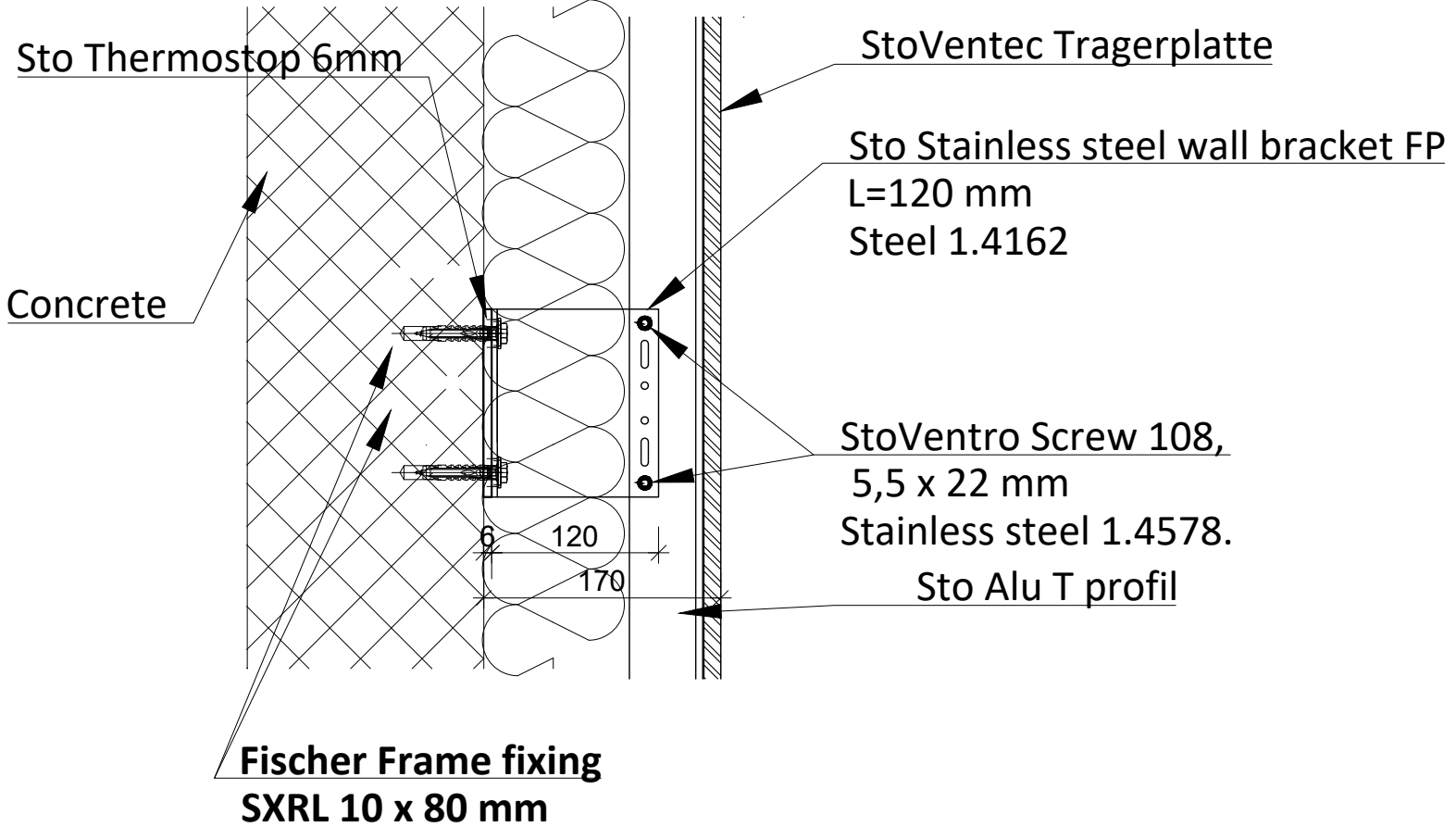
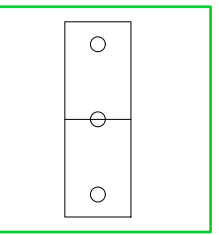
Fixed point detail  
Concrete (L=220 mm)



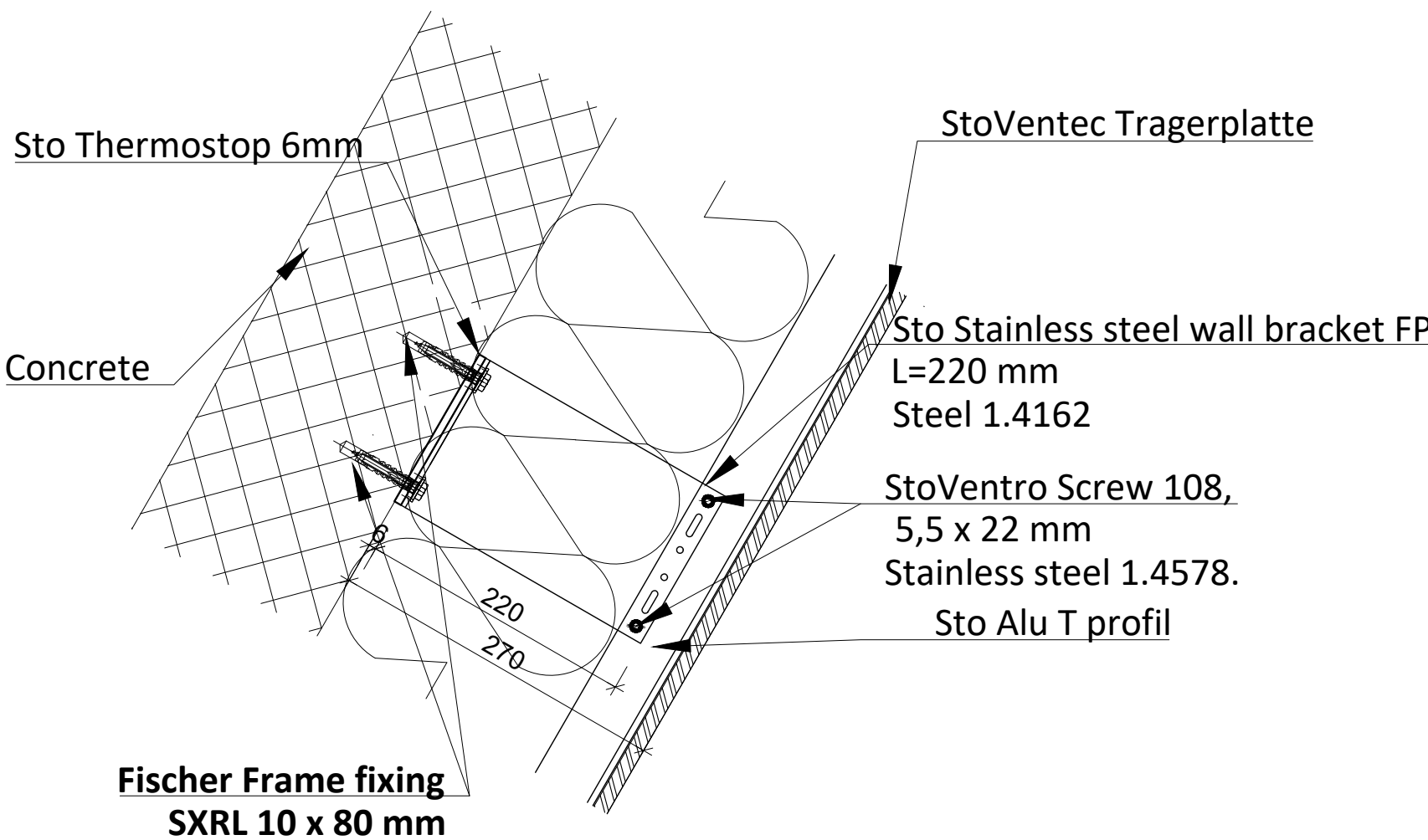
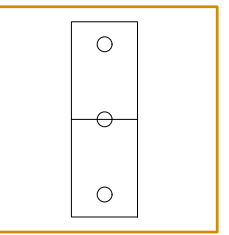
Fixed point detail  
Concrete (L=220 mm)



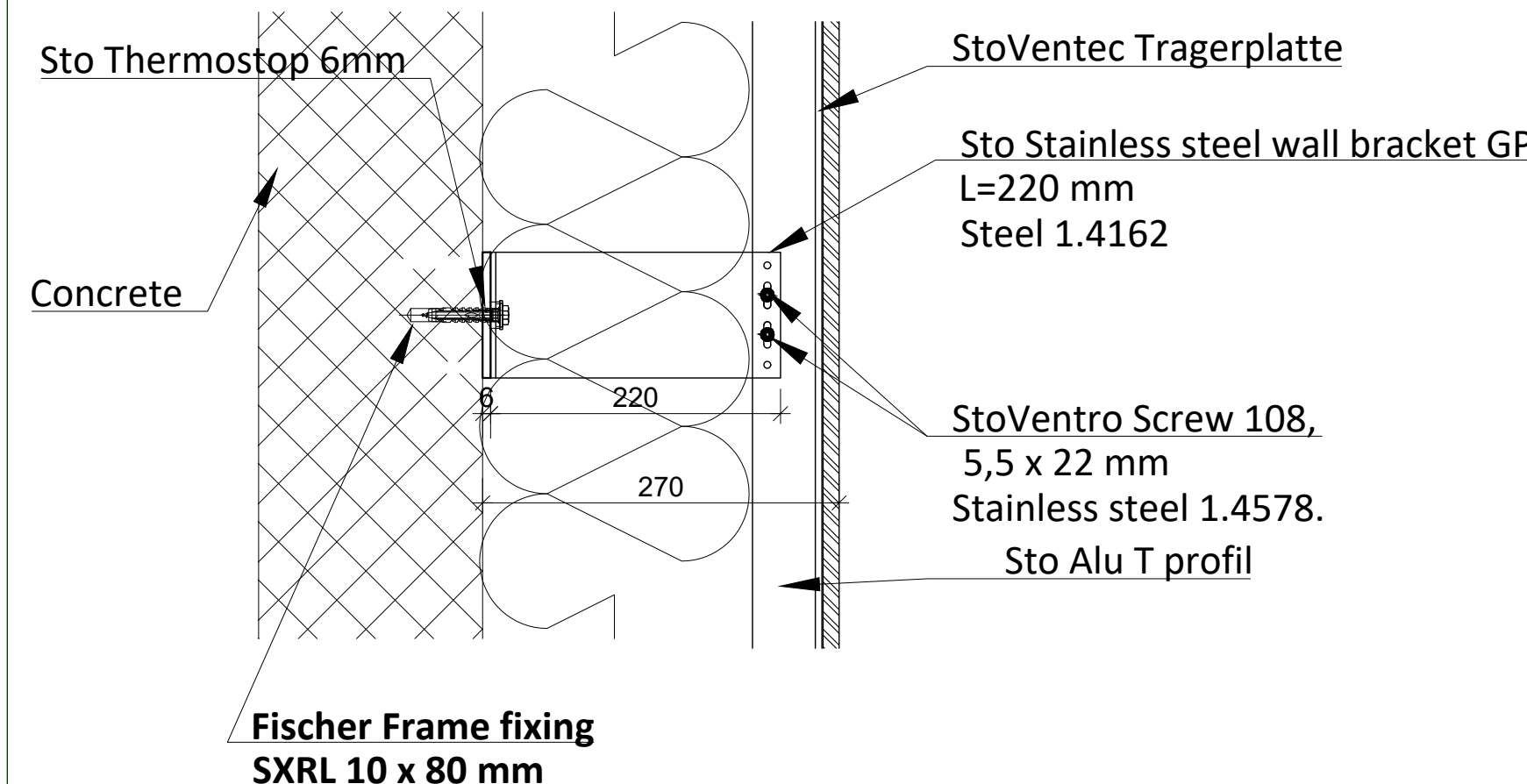
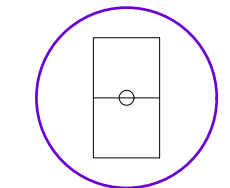
Fixed point detail  
Concrete (L=120 mm)



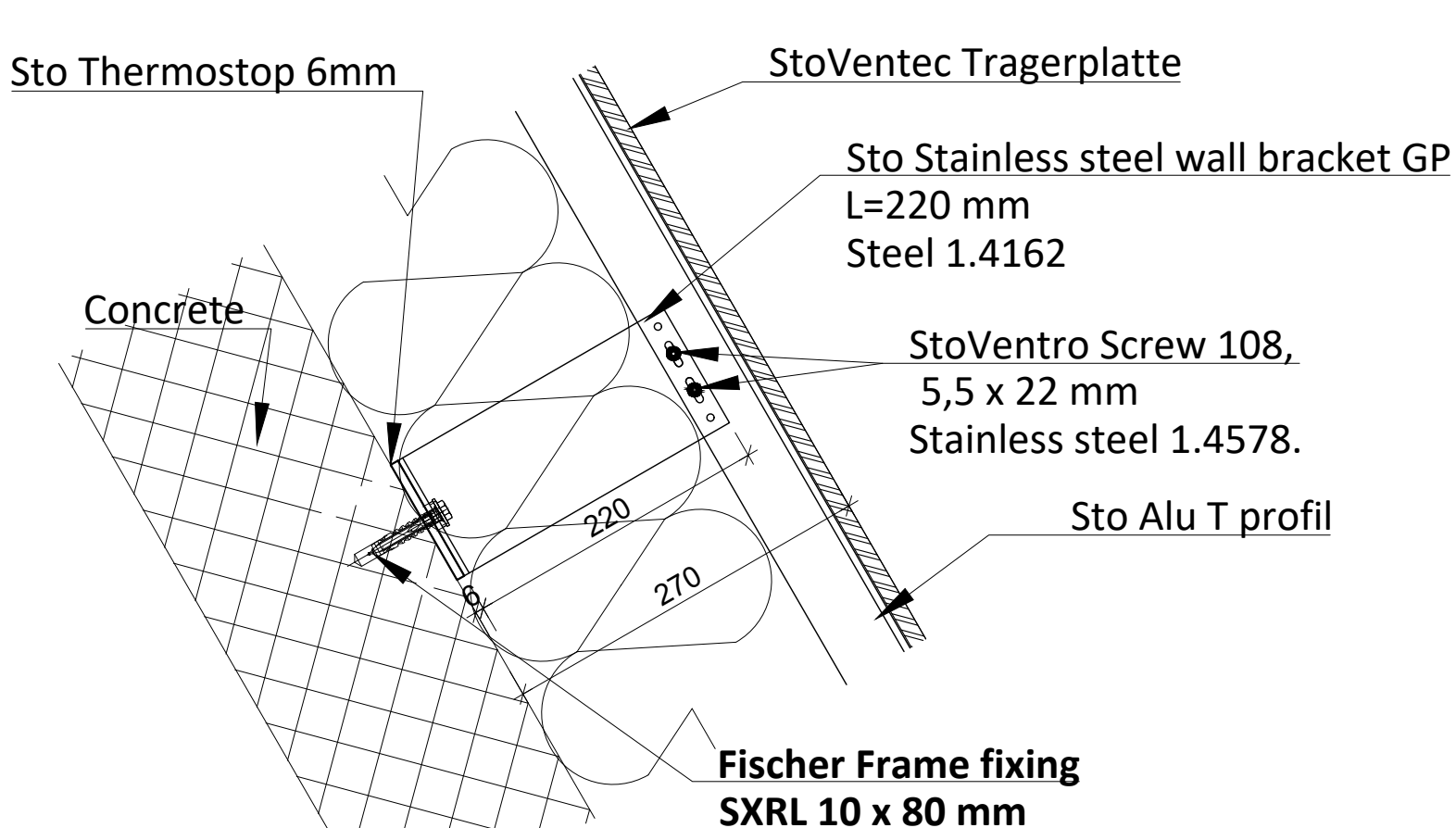
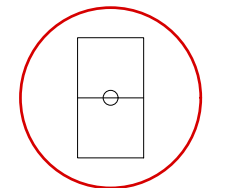
Fixed point detail  
Concrete (L=220 mm)



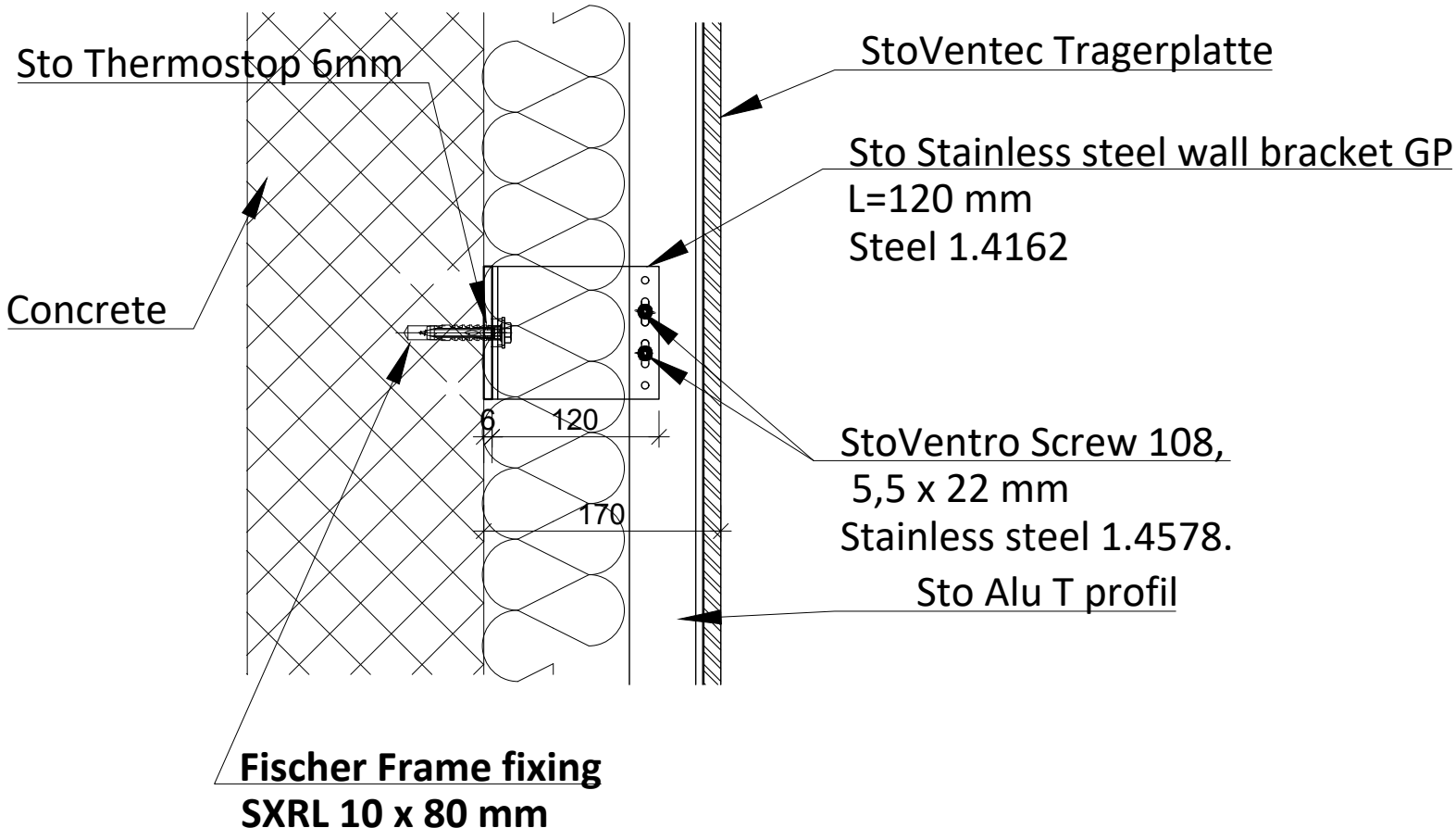
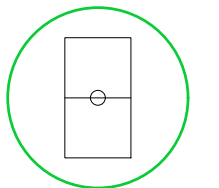
Gliding point detail  
Concete (L=220 mm)



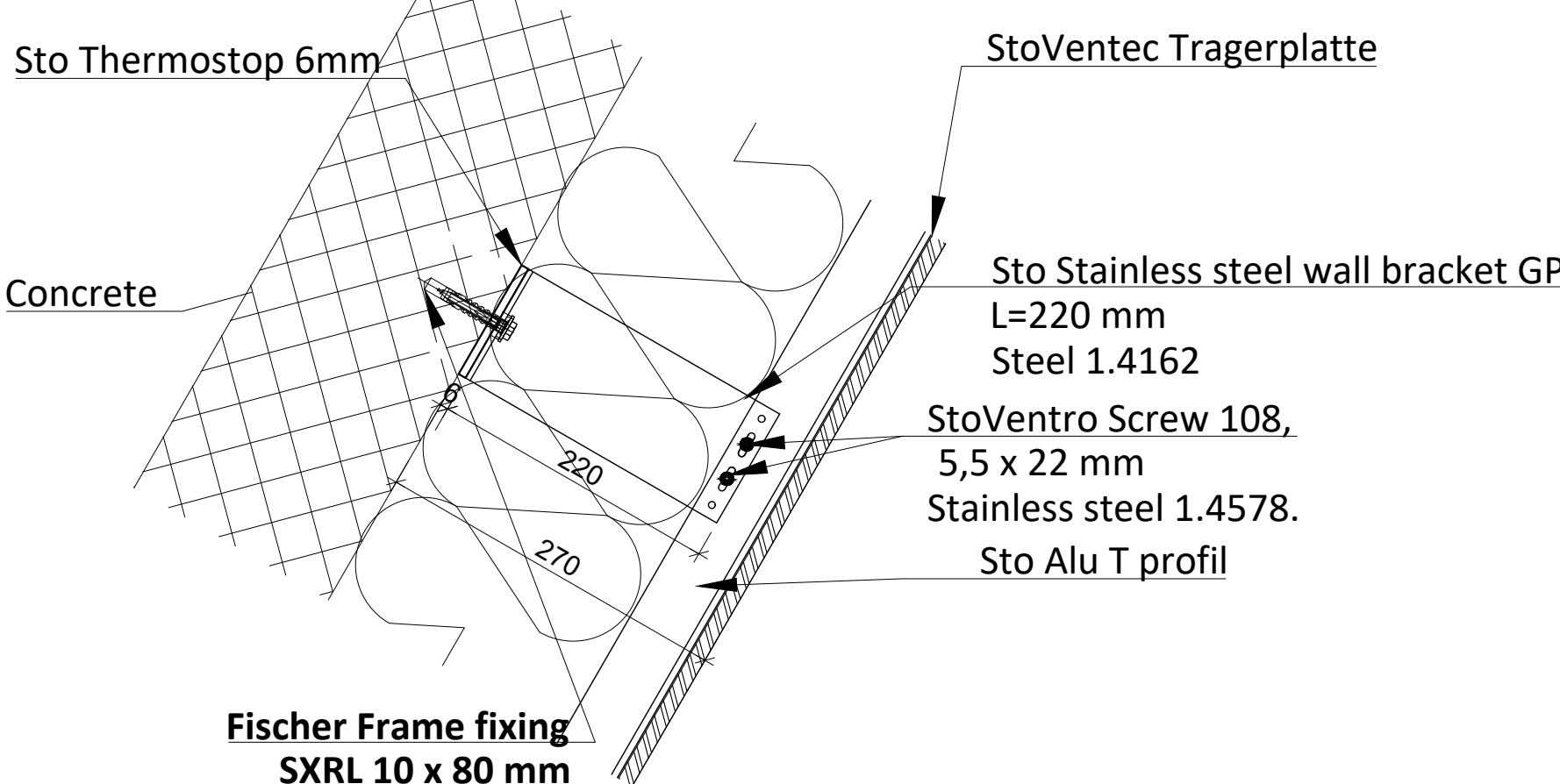
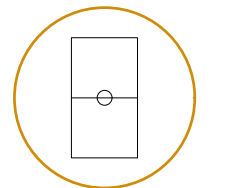
Gliding point detail  
Concete (L=220 mm)



Gliding point detail  
Concete (L=120 mm)

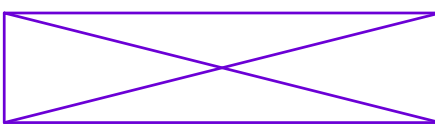


Gliding point detail  
Concete (L=220 mm)

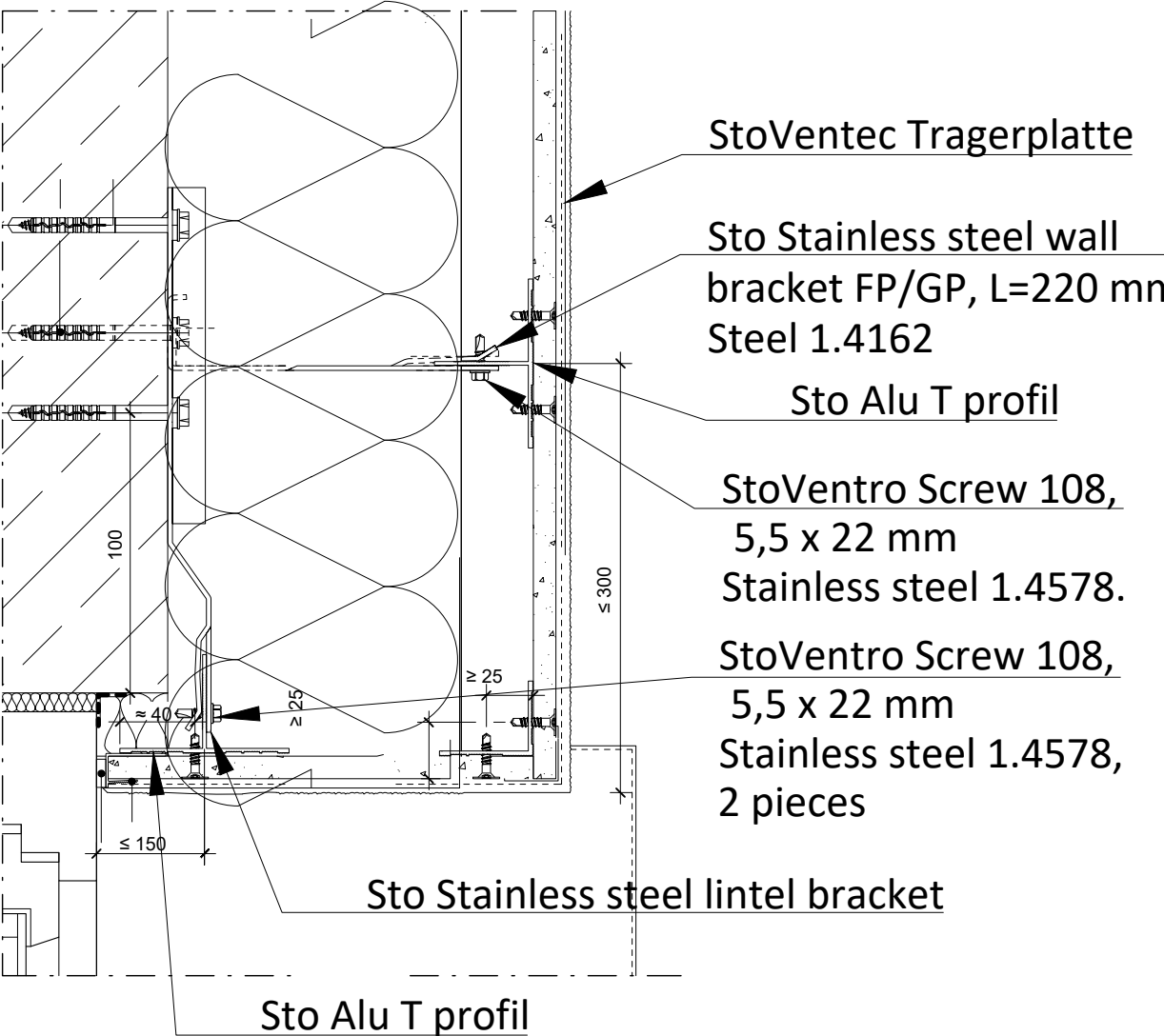


Lintel detail


Fixed point (FP)



Gliding point (GP)



In case of discrepancy between the situation on the building site and the architectural design and laying plan, be sure to contact the designer before installation.  
All dimensions must be checked in on building site, the dimensions given in the laying plan are taken from the architectural drawings. These drafts do not replace the necessary elaboration of details and work plan. Meeting the requirements of investor and relevant services offices related to the construction of the facade are the responsibility of the contractor. All dimensions must be measured and determined on site. All technical specifications and manufacturer's instructions must be followed.  
The lengths of the WH Sto 2,0 mm stainless steel wall brackets must be determined on site.  
The drawings refer only to the substructure of the facade.  
Finish of the facade and its joints should be carried out according to the architect's instructions.  
The draft is preliminary until it is approved by the architect (dimensions) and approved by the auditor or other responsible body or office (statics).

 <b>MEMBRAN PROJEKTIRANJE D.O.O.</b> SLAVONSKA AVENIJA 52M, 10000 ZAGREB OIB: 02556667860	PROJECT: StoVentec R facade	
	DESIGNER: Ivan VRCA, mag.ing.aedif PETRA BENKO, mag.ing.aedif	SIGNATURE AND STAMP:
Meštrović Obitina Ljubljana Sto Ges.m.b.t. Richterstrasse 47, AT-9500 Villach, Austria PVB (P. KTU26456102)	CENTER plezalnih Sportov Ljubljana	
2024-12-04-GR	DETAILS	
Ljubljana, Kopraska ulica	SCALE: 1:10	
STATIC CALCULATIONS	DATE: January 2025.	